

DOSING & ADMINISTRATION



Recommended dose:
200 mg IV Q3W



PREPARATION



Each vial contains **100 mg** of Etapidi in a **10 ml** concentrate. Two vials are required for each **200 mg** dose.



Inspect reconstituted solution
Should be slightly opalescent, colorless to slightly yellow. **DO NOT** use the vial if visible particles or discoloration are observed



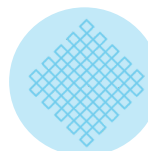
Use sterile syringe to transfer from vials to IV bag containing 0.9% NaCl
Concentration of infused solution should be from **2 mg/mL** to **5 mg/mL**



Mix diluted solution in IV bag by gentle inversion
Do not co-administer with other medications through the same IV tubing



ADMINISTRATION



Always use an IV infusion line

With sterile, non-pyogenic, low-protein binding Pore size: **0.20 to 0.22 µm**



Timing

1st infusion: **60 minutes** If well-tolerated, subsequent doses can be given over **30 minutes**



Storage

Keep refrigerated at between **2°C and 8°C**; do not freeze. Do not expose to light



Discard any portion left in the vial unused

Vials of Etapidi are intended for single use only.